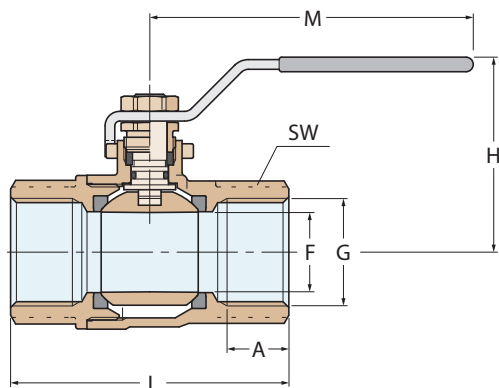


## valvole antiblocco e sfera Guidi srl Guidi "non-stick" and ball valves

### 2300



**Valvola a sfera F-F  
passaggio totale a leva**  
Lever operated ball  
valve F-F full flow

RINA type approval  
ISO 9093:2020

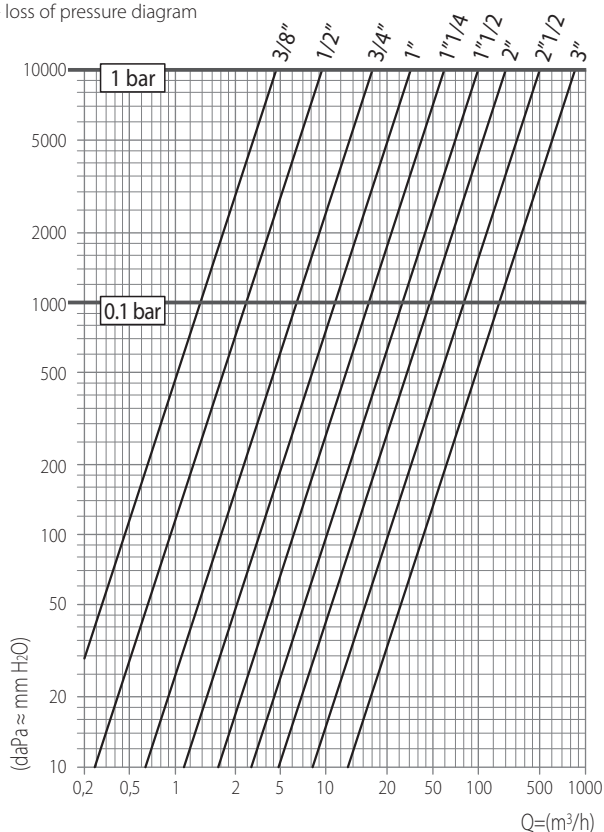


FILETTATURE / THREAD :  
G = EN 10226/1 (BS 21)

2300	3/8"	1/2"	3/4"	1"	1"1/4"	1"1/2"	2"	2"1/2"	3"
Weight (gr)	190	280	390	600	990	1200	2000	3700	5860
SW	22	26	32	41	50	55	69	84	98
M	78	78	98	98	128	128	158	158	240
H	48	49	56	60	72	77	88	105	178
L	54	65	72	86	99	107	128	157	177
F	12	14.8	19.5	24.5	31.5	38.5	48	65	78
A	11.4	15	16.3	19.1	21.4	21.4	25.7	30.2	33.3
<b>G</b>	<b>3/8"</b>	<b>1/2"</b>	<b>3/4"</b>	<b>1"</b>	<b>1"1/4"</b>	<b>1"1/2"</b>	<b>2"</b>	<b>2"1/2"</b>	<b>3"</b>

Bronzo  
Bronze

Diagramma portate - perdite di carico  
Flow rate - loss of pressure diagram



Corpo e manicotto in Bronzo CC499K  
Bronze CC499K body and cap

Seggi e rondella premistoppa in PTFE  
PTFE seals and anti-friction ring

O-ring in EPDM  
EPDM O-ring

Asta in Ottone CW625  
Brass CW625 rod

Sfera in ottone rivestito con trattamento ecocompatibile  
resistente alla corrosione  
Brass Ball

Leva e dado in acciaio inox 304  
Stainless steel 304 lever and nut

G	1 bar
3/8"	9000
1/2"	18000
3/4"	39000
1"	71000
1"1/4"	119000
1"1/2"	196000
2"	300000
2"1/2"	500000
3"	850000

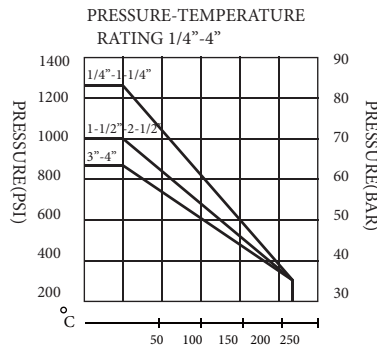
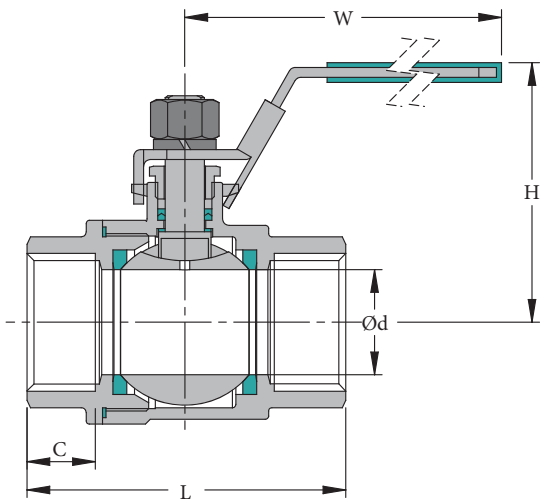
Portate di acqua - lt/h  
Flow-rate capacity - lt/h



**STAINLESS STEEL BALL VALVE 2-PC FULL PORT 1000 WOG PN63**

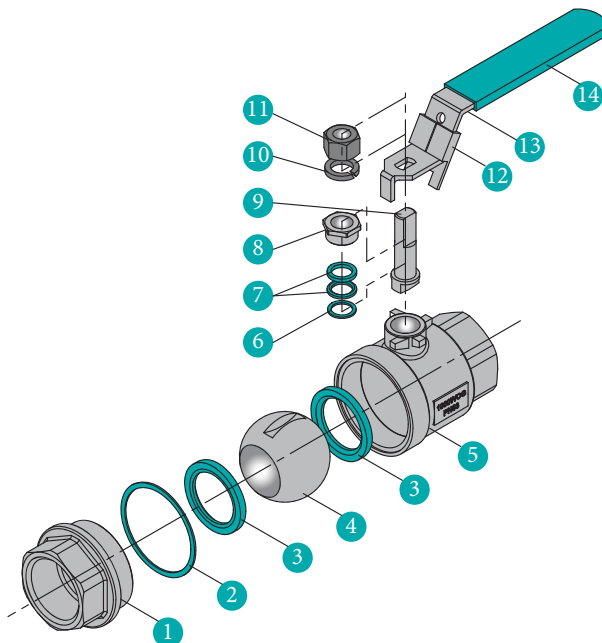


SIZE		Ød	L	W	H	C
1/4"	DN8	11.5	55	98	56	10
3/8"	DN10	12.5	55	98	56	10
1/2"	DN15	15	61	99	60	14
3/4"	DN20	20	70	108	67.5	15
1"	DN25	24	82.5	136	73	20
1-1/4"	DN32	32	95	137	79	20
1-1/2"	DN40	38	107.5	171.5	90	21
2"	DN50	48	120	171.5	98	21
2-1/2"	DN65	64	161	215	129	26
3"	DN80	80	178	240	140	31
4"	DN100	98	220	317	153.5	37



- Investment Casting Body
- Blow-out Proof Stem
- Full Port
- 1000PSI PN63
- Standard: ASME B16.34
- All kinds Thread Standard
- Locking Lever Available
- Testing: API598

**PART LIST**



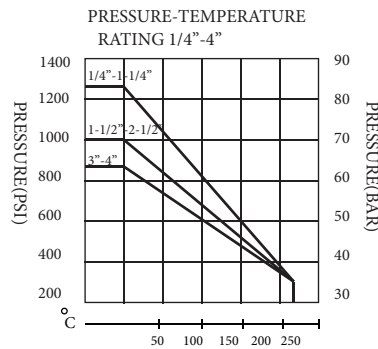
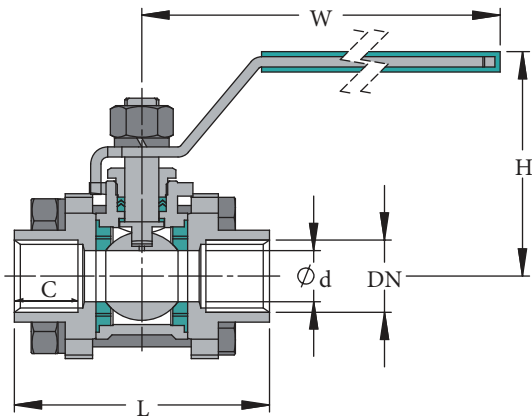
MATERIAL LIST				
ITEM	PART NAME	MATERIAL		
1	CAP	CF8M	CF8	WCB
2	BODY GASKET	PTFE		
3	BALL SEAT	PTFE	PTFE+15%FV	
4	BALL	SS316	SS304	
5	BODY	CF8M	CF8	WCB
6	THRUST WASHER	PTFE		
7	STEM PACKING	SS304		
8	STOP NUT	SS304		
9	STEM	SS316	SS304	
10	SPRING WASHER	SS304		
11	STEM NUT	SS304		
12	HANDLE LOCKER	SS304		
13	HANDLE	S.S		
14	HANDLE COVER	PLASTIC		



**STAINLESS STEEL BALL VALVE 3-PC FULL PORT 1000 WOG PN63**

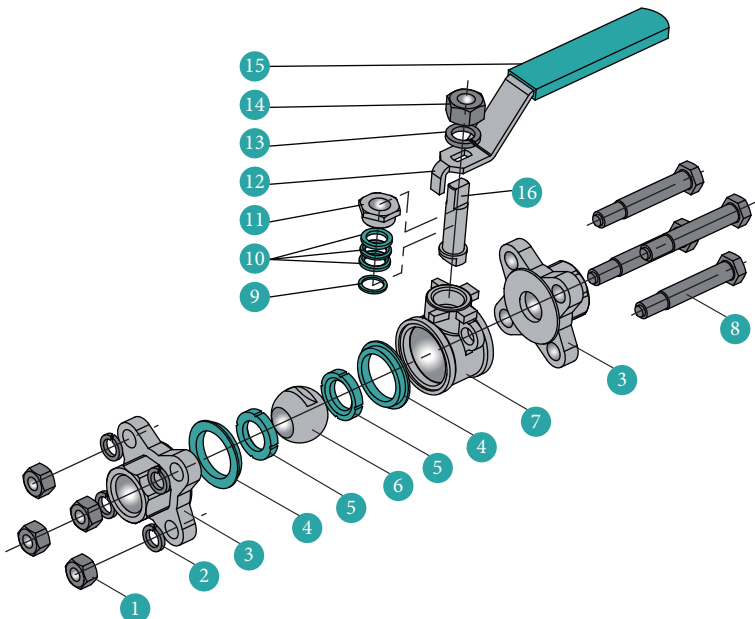


SIZE		L	Ød	H	W	C
INCH	DN					
1/4"	DN8	55	10.5	42	100	11
3/8"	DN10	55	10.5	42	100	11
1/2"	DN15	60	15	58.5	100	13.5
3/4"	DN20	70	20	64.5	120	14.5
1"	DN25	80	25	68	120	17
1-1/4"	DN32	92	32	79.5	150	18.5
1-1/2"	DN40	105	38	90.5	170	19
2"	DN50	125	48	98	170	22.5
2-1/2"	DN65	160	64	123	210	29
3"	DN80	180	76	133.5	250	29.5
4"	DN100	225	98	162.5	300	33



- Economic Size
- Investment Casting Body
- Blow-out Proof Stem
- Full Port
- 1000PSI PN63
- Standard: ASME B16.34
- All kinds Thread Standard
- Locking Lever Available
- Testing: API598

**PART LIST**



MATERIAL				
ITEM	ITEM	ITEM		
1	NUT	SS304		
2	SPRING WASHER	SS304		
3	CAP	CF8M	CF8	WCB
4	BODY GASKET	PTFE	PTFE+15%FV	
5	BALL SEAT	PTFE	PTFE+15%FV	
6	BALL	SS316	SS304	
7	BODY	CF8M	CF8	WCB
8	BOLT	SS304		
9	THRUST	PTFE		
10	STEM PACKING	PTFE		
11	STOP NUT	SS304		
12	HANDLE	S.S		
13	SPRING WASHER	SS304		
14	STEM NUT	SS304		
15	HANDLE COVER	PLASTIC		
16	STEM	SS316	SS304	



**HIGH PRESSURE STEEL - STAINLESS STEEL BALL VALVE**

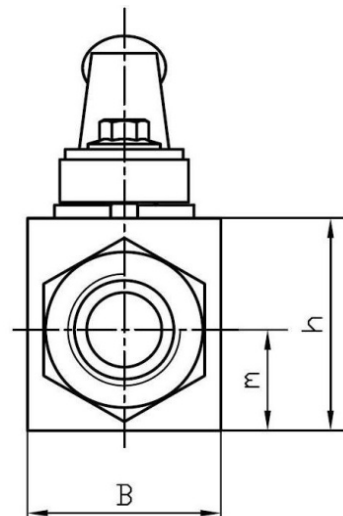
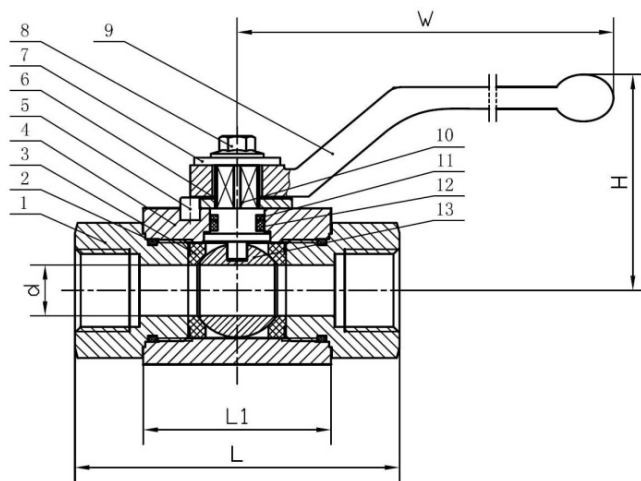
**Feature:**

- Design and manufactured in accordance to ANSI B16:34 standard
- Full Bore
- Size: 1/4" - 2" ( $\Phi 6$ - $\Phi 42$ )
- Maximum Working Pressure:  
DN6 to DN15: PN 500  
DN20 to DN25: PN 420
- Burst Pressure: Burst pressure is 2 times the maximum working pressure.
- Threaded End: NPT, BSPP
- Temperature Range: -30°C to +100°C
- Applicable Medium: General oil & water hydraulics. Not suitable for Gas applications.



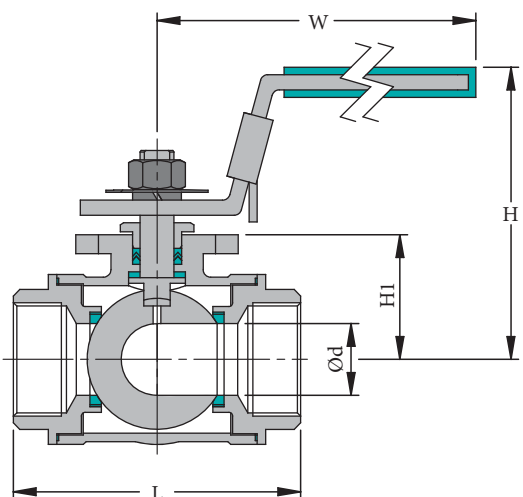
**Material List:**

NO	PART NAME	MATERIAL
1	End Cap	ASTM A276 316
2	O Ring	NBR
3	Seat	POM
4	Body	ASTM A276 316
5	Pin	ASTM A276 316
6	Snap Ring	ASTM A276 316
7	Metal Gasket	ASTM A276 316
8	Handle Nut	ASTM A276 316
9	Handle	Aluminium Alloy
10	Stem	ASTM A276 316
11	Back-up Ring	PTFE
12	O Ring	NBR
13	Ball	ASTM A276 316

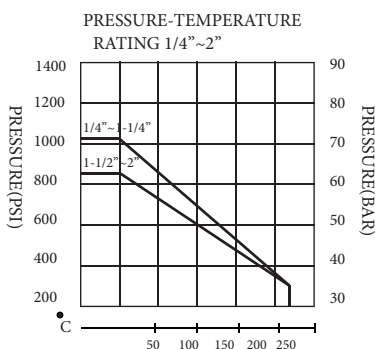




**STAINLESS STEEL BALL VALVE 3-WAY L/T PORT  
1000WOG PN63 ISO5211 MOUNTING PAD**

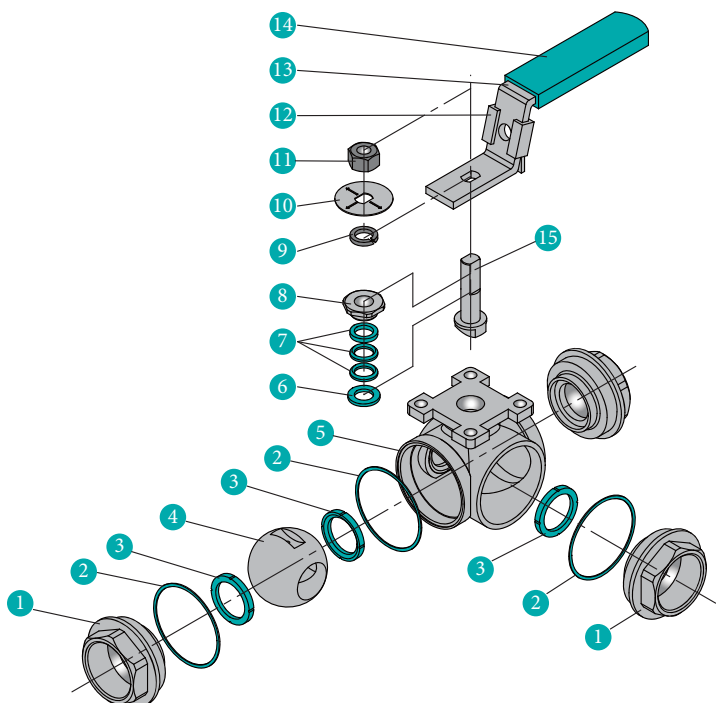


SIZE	DN	Ød	L	H	H1	W	ISO5211
1/4"	8	8	50	57.5	21	112	F03
3/8"	10	8	50	57.5	21	112	F03
1/2"	15	12	68	69	30	115	F03
3/4"	20	15	78	72	34	115	F04
1"	25	20	90	77	37	135	F04
1-1/4"	32	25	105	86	44.5	150	F04
1-1/2"	40	32	120	95	52.5	182	F05
2"	50	43	140	122	66.5	215	F07



- Investment Casting Body
- Blow-out Proof Stem
- Reduce Port
- 1000PSI/PN63
- Standard:ASME B16.34
- V-ring Packing for Self-Adjust
- ISO 5211 Mounting Pad
- L/T Port Available
- Testing:API598/SP-110

**PART LIST**



MATERIAL LIST			
ITEM	PART NAME	MATERIAL	
1	CAP	CF8M	CF8
2	BODY GASKET	PTFE	
3	BALL SEAT	PTFE	R-PTFE
4	BALL	SS316	SS304
5	BODY	CF8M	CF8
6	THRUST WASHER	PTFE	
7	STEM PACKING	PTFE	
8	STOP CAP	SS304	
9	SPRING WASHER	SS304	
10	DERECTION WASHER	ALUMINUM	
11	STEM NUT	SS304	
12	LOCKING DEVICE	SS304	
13	HANDLE	S.S	
14	HANDLE COVER	PLASTIC	
15	STEM	SS316	SS304



**BALL VALVES WITH ACTUATORS / AUTOMATION ELEMENTS**

